



Media Contact
Dinah Massie

713.881.3244

Houston TranStar Includes Transit Information on its Web Site

Transit information feature offers flexibility for area travelers

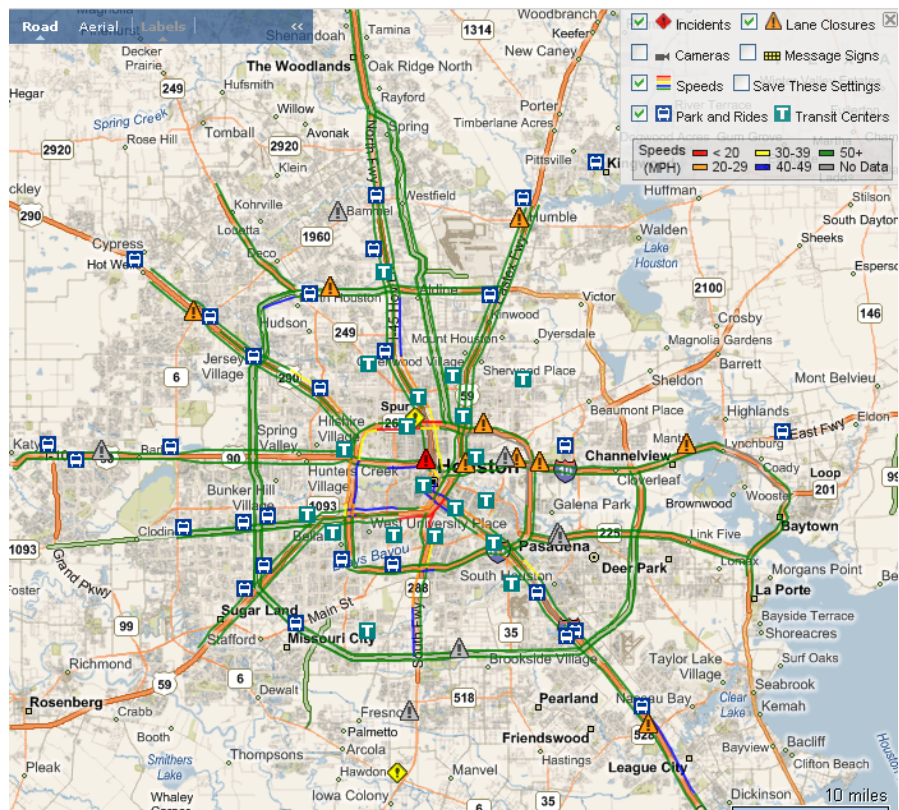
HOUSTON (February 16, 2009) Houston TranStar's web site now displays all locations of the Metropolitan Transit Authority of Harris County (METRO)'s Park & Ride lots and Transit Centers on its live traffic condition maps.

The new tool gives commuters additional options for making travel decisions. When users click on Park & Ride and Transit Center locations from the maps, they can access detailed information on bus schedules and facility locations.

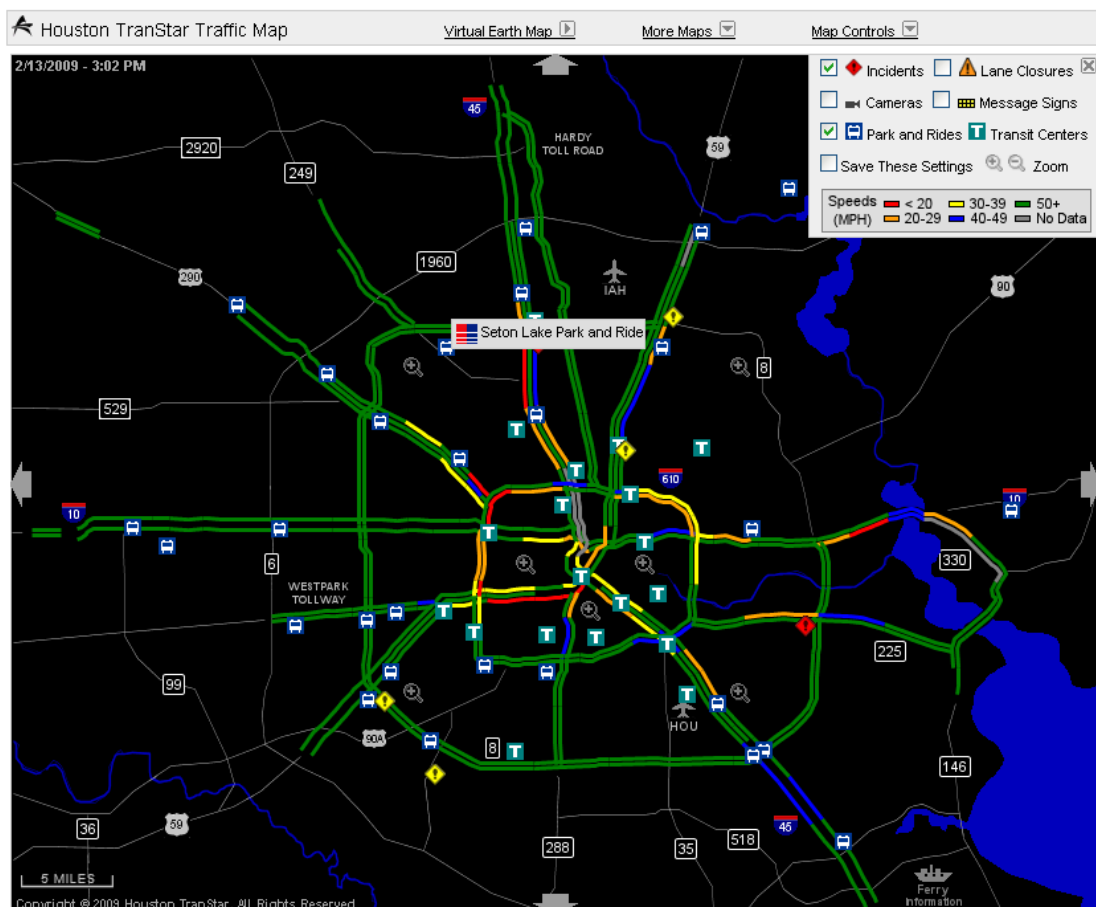
“With the addition of METRO's Park & Ride lots and Transit Centers on our traffic condition maps, commuters have another tool to help them determine the most efficient way to get around,” said John R. Whaley, director of Houston TranStar.

The Houston TranStar traffic condition maps combine transit and other traveler information onto one detailed map, with options such as viewing street level data on either road or photographic aerial maps. The Park & Ride lots and Transit Centers are displayed along with real-time traffic speed and travel time information, traffic cameras, ongoing incidents, roadway message sign information, road closures and other traveler information.

"Let's say there's an accident at IH-45 North and IH-610 headed toward downtown. Using our web site, a commuter who lives in Spring can decide whether he could get to work faster by parking at the Spring or Kuykendahl Park & Ride lots and take the bus downtown or to the Texas Medical Center instead of driving all the way in," said Tom Lambert, METRO's Senior Vice President and Chief of Police.



The traffic condition maps are located on the Houston TranStar web site at <http://traffic.houstontranstar.org>. An enhanced version of the maps utilizing the Microsoft Virtual Earth Platform can be found at <http://traffic.houstontranstar.org/ve/>.



Houston TranStar is a collaboration between four government agencies that coordinate and enhance transportation and emergency management services, responding to incidents and emergency in Harris County and beyond. Sharing their resources to serve area residents their agencies are the Texas Department of Transportation (TxDOT), Harris County, Metropolitan Transit Authority of Harris County (METRO) and the City of Houston.